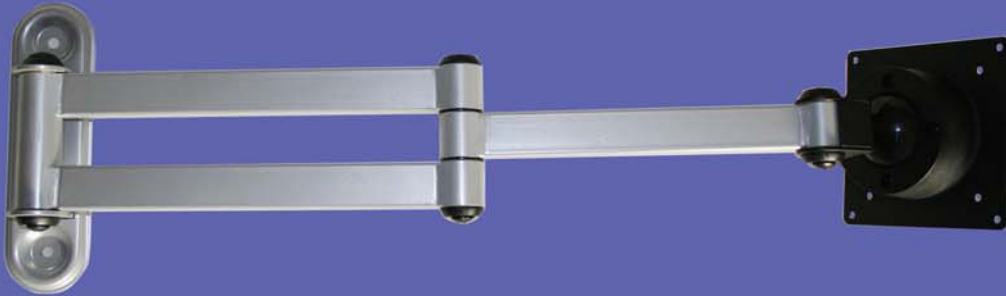




**A811**



- **Wall-Mounted Articulating Swivel Arm for LCD Monitors, TV**
- **Easy to install with the perfect wall mount**
- **Superior flexibility and movement**
- **Meets VESA standards (7.5x7.5cm and 10x10cm)**
- **Made of 100% recycled iron material for strength and stability**
- **Each monitors weighing: 15kgs(33 lbs) up to 23"**
- **Tilting any direction: 30 degrees**
- **LCD monitor swivel: 180 degrees**
- **Left & right moving: 90 degrees**
- **Horizontal moving dist: -51~51cm(40")**
- **Panel to wall thickness: 7.8cm(3")**
- **Save your workspace**